

GENERAL GUIDELINE

As we understand that Boat builders , Resellers and other Marine professionals prefer swift deliveries, We always strive to maintain a ready to purchase stock on products considered essential for Building or maintaining a boat.

Please contact us for any support you might require in choosing the right products for your project. Our team will be ready to provide you with any technical assistance.

If additional information is required, such as; drawings, installation instruction or further specifications please send us a request at info@gtmphuket.com

If you find yourself in need of a critical part for your project that are perhaps not reflected in our catalogue. We request you to please contact us with your enquiries for any products that you may not find in our catalogue or visit our online storefront at www.gtmphuket.com

© 2017 (GTM) GUARANTEE THAI-MALDIVES .CO.,LTD

All rights reserved.

No part or parts of this publication/catalogue may be produced in any form without the prior written permission of the publisher.

All information are correct at the time of printing.
Products may subject for availability.

MARINE SUPERSTORE Catalogue 2017-2018
Designed and published by.

GUARANTEE THAI-MALDIVES CO.,LTD.
*20/101 Moo 2 Boat Lagoon Park Plaza A,
Thepkasattri Rd, T. Kohkaew,
A. Muang, Phuket 83200
THAILAND*

Email : info@gtmphuket.com

Tel : +66 766 08691

Fax : +66 766 08692

Welcome

Dear Customer,

Our Marine Superstore is situated in Phuket, Thailand, home for 6 Yacht Marinas. Superstore for marine products and accessories is owned and operated by Guarantee Thai Maldives Co.,ltd. (GTM), a company specialized in boat accessories and equipment.

GTM has been operating in Thailand since year 2009. Since then our Marine Superstore has been a central supplier in Thailand for various retail vendors, Boat builders, Boat owners and Charter operators alike.

Our Marine Superstore is capable and maintains a large stock from leading Marine Equipment brands from all over the World.

The export regulations here in Thailand is favorable for us to export our products anywhere in world, In return it helps us to supply our customers at a lower cost and in a timely order.

GTM's, Marine Superstore is backed by a highly experienced and a dedicated team of staff who will be willing and ready to attend to every detail of your needs and requirements.

Marine Superstore is famous for supplying the right product for the right price at the right time. After all, that is the Motto we stand behind.

We certainly hope that you will enjoy reading and using our catalogue for all your future needs. Visit us at www.gtmphuket.com for more Product and Accessories.

Ahmed Luthfy
CEO

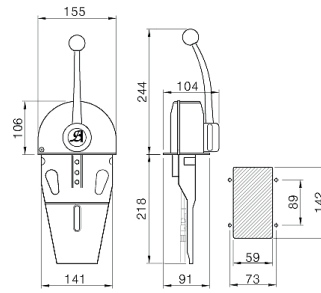
MARINE SUPERSTORE

<i>STEERING SYSTEMS</i>	<i>01</i>	<i>BLOWERS</i>	<i>31</i>
<i>CAPSTAN/ CHAIN STOPPERS</i>	<i>03</i>	<i>PUMPS</i>	<i>33</i>
<i>HORIZONTAL WINDLASS</i>	<i>04</i>	<i>MARINE TOILETS</i>	<i>37</i>
<i>VERTICAL WINDLASS</i>	<i>05</i>	<i>VENTILATORS</i>	<i>39</i>
<i>WINDLASS CONTROLS</i>	<i>06</i>	<i>THRU HULL</i>	<i>41</i>
<i>FENDERS</i>	<i>07</i>	<i>DECK FILLERS</i>	<i>42</i>
<i>MEGA-YACHT FENDERS</i>	<i>08</i>	<i>SWISS ARMY KNIVES</i>	<i>43</i>
<i>GUNWALE FENDERS</i>	<i>10</i>	<i>COOLERS</i>	<i>45</i>
<i>LIFE JACKETS</i>	<i>11</i>	<i>NAVIGATION LIGHTS</i>	<i>48</i>
<i>MOB SYSTEMS</i>	<i>14</i>	<i>BINOCULARS</i>	<i>49</i>
<i>DINGHIES</i>	<i>15</i>	<i>COMPASS</i>	<i>50</i>
<i>BOAT HOOKS & HOOK ENDS</i>	<i>17</i>	<i>MARINE HORNS</i>	<i>51</i>
<i>PADDLES</i>	<i>18</i>	<i>MARINE PAD LOCKS</i>	<i>52</i>
<i>BOW THRUSTERS</i>	<i>19</i>	<i>GENERAL PURPOSE</i>	<i>53</i>
<i>TANKS</i>	<i>23</i>	<i>STAINLESS FITTINGS</i>	<i>55</i>
<i>GAUGES</i>	<i>26</i>	<i>BOW ROLLERS</i>	<i>57</i>
<i>LIQUID LEVEL SENSORS</i>	<i>27</i>	<i>ANCHORS</i>	<i>58</i>
<i>BILGE PUMPS</i>	<i>29</i>	<i>ELECTRICAL COMPONENTS</i>	<i>59</i>
<i>FLOAT SWITCHES</i>	<i>30</i>	<i>BOAT CARE</i>	<i>66</i>

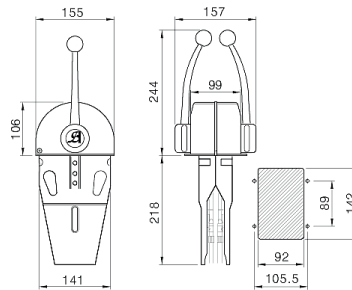
ENGINE CONTROL LEVER



A



B



CODE	TYPE	ENGINES	SIZE
050004	ST TYPE	1	Refer to diagram A
050006	ST TYPE	2	Refer to diagram B

STERRING WHEEL



Laguna



New Port



Riviera

CODE	MODEL	DIMENSIONS
090072	Laguna MF 7403S	13.4 INCHES, (345 MM)
099702	New Port MF 7403 BFC	13.6 INCHES, (345 MM)
070001	Riveria MF 8001 01	13.8 INCHES, (350 MM)



OUTBOARD STEERING



HELM PUMP



HP HELM PUMP



COMPLETE PACKAGED SYSTEMS

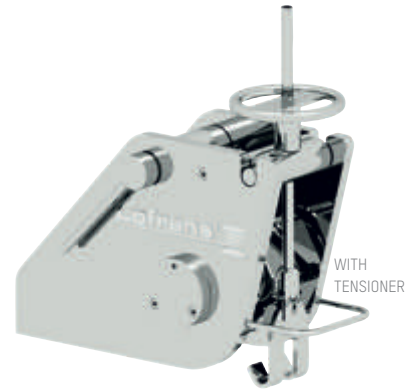
CODE	TYPE	DETAILS
070003	HELM PUMP	SS 304 Shaft, Adjustable Displacement from 48cc to 85cc (HEAVY DUTY)
070001	OUT BOARD	M0 350v (H) Single engine, Up to 350Hp, wheel turns 5.3
GTM001	STERN DRIVE	Package- Helm pump, cylinder, Hydraulic oil, Hydraulic hose ,Accessories* *

**subject to availability

HYDRAULIC STEERING

for more Products and Accessories visit us at www.gtmphuket.com

CHAIN STOPPERS



CODE#	MODEL	CONSTRUCTION	CHAIN SIZE	COMPATIBLE WINDLASSES
072191	LOFRANS - CHAIN STOPPERS	STAINLESS STEEL	12MM, 14MM, 16MM	X3, X3.5, X4, X5, ERCOLE FALKON, TITAN.
072192	LOFRANS - CHAIN STOPPERS	STAINLESS STEEL	14MM, 16MM	ERCOLE VERTICAL

They are normally installed on the vessel in addition to the anchor windlass, with the number of capstan units depending on the length and displacement of the vessel.

They are controlled by a pair of the foot switches close to the capstan, so that the operator can have his/her hands free for rope handling



T1000



T700



T500

LOFRANS CAPSTANS

CODE	MODEL	BOAT LENGTH	MOTOR	CONSTRUCTION	POWER	AMPS	WORKING LOAD
403130	LOFRANS-T500	30 FT - 40 FT	500 W	CHROMED BRONZE or ANODISED ALUMINUM	12 V	75	630 KG
220006	LOFRANS-T700	40 FT - 50 FT	700 W		12 V	110	850 KG
418159				24 V	50	900 KG	
409564	LOFRANS-T1000	45 FT - 55 FT	1000 W	12 V	135	1000 KG	
187324				24 V	70	1060 KG	

Amps at Working Load



TITAN



CAYMAN



DORADO

Main features

- Marine aluminium anodised body
- Available in white polyester coating
- Independent Gypsy and drum operation
- Manual chain release
- Manual override
- Heavy duty rated IP66 electric motor

HORIZONTAL WINDLASS

CODE	MODEL	MOTOR	CONSTRUCTION	POWER	Amps at Working Load	
					AMPS	MAX PULL
409568	LOFRANS - DORADO	500 W	ANODISED ALUMINIUM	12 V	65	600 KG
220279	LOFRANS - CAYMAN	1000 W	ANODISED ALUMINIUM	12 V	150	1200 KG
600180				24 V	80	1325 KG
404724	LOFRANS - TITAN	2300 W	ANODISED ALUMINIUM	24 V	140	2800 KG

for more Products and Accessories visit us at www.gtmphuket.com



X2

Luxury chrome bronze base and drum
 Special watertight stainless steel ball bearing in the base
 With drum or Low profile
 Independent Gypsy and drum operation
 Rope and chain combination Gypsy
 Manual chain release
 Manual override available for chromed bronze models only
 Rope chain management by the spring loaded arm
 Chain counter magnet pre-installed as standard
 IP67 rated heavy duty electric motor
 Anodised marine aluminium gearbox
 Control Box included in package



X3

Luxury chrome bronze base and drum
 With drum or Low profile
 Independent Gypsy and drum operation
 Rope and chain combination Gypsy
 Manual chain release
 Manual override available for chromed bronze models only
 Rope chain management by the spring loaded arm
 Chain counter magnet pre-installed as standard
 IP66 rated heavy duty electric motor
 Anodised marine aluminium gearbox
 Control Box included in package



ERCOLE VERTICALE

Construction in mirror polished AISI 316L stainless steel
 Band brake to assist in chain control, thanks to an easy-to-manage large handwheel
 Independent Gypsy and drum operation
 Manual chain release
 Manual override to recover the chain and anchor in case of electrical failure
 Internal ratchet to prevent chain jams into the chain cocker which could damage the deck
 Chain counter support integrated by the sensor inserted in the base and the magnet in the Gypsy
 Available also in counter clockwise rotation
 High efficiency Lofrans planetary-worm screw gearbox made in anodised black aluminium with gears made in high mechanical strength material
 Heavy duty electric motor
 Power: DC, AC and hydraulic
 Available in custom versions

VERTICAL WINDLASS

CODE	MODEL	MOTOR	CONSTRUCTION	POWER	AMPS	WORKING LOAD
600044	LOFRANS - X2	700 W	ALUMINIUM	12 V	90	750 KG
602111				24 V	45	
600057	LOFRANS - X2	1500 W	ALUMINIUM	12 V	150	1200 KG
600061				24 V	75	1250 KG
601079	LOFRANS - X3	1500 W	CHROME BRONZE	12 V	150	1200 KG
057451	LOFRANS - X3	1700 W	ALUMINIUM	12 V	90	1600 KG



This switch, usually installed on the cockpit, is made by a fixing plaque and by a three position switch (Up-Off-Down)

CODE 404728



This rocker switch has a modern and practical design. It is reliable and watertight and it is supplied with the opposite case to make simple and ensure the installation.

CODE 187338



This device is a switch which works simply pushing the foot on the button. The base is in stainless steel while the cover to prevent accidental engagement is in composite. The button is in special marine rubber able to withstand UV ray and the marine environment. Available in UP and DOWN version.

CODE 60011

CODE 60012



This remote chain counter model GALAXY 503 has been specifically designed to give the full control in anchoring. It's a reliable and practical instrument, technologically advanced, specifically design for use in marine environments. The external casing, rated with IP66 and supplied with waterproof plug and socket rated IP67. The extending flexible cable (approximately 4 meters) gives the maximum freedom on board during anchoring manoeuvring. Provided with an evolved microprocessor that offers a series of advantages for full control of the anchoring.

CODE 60015



Lofrans' radio remote control is designed to work with our range of windlasses. The remote control can also be used to operate other onboard equipment such as thrusters, passerelles, cranes, etc.

CODE 312976



SERIES L

Series H are Standard duty fenders for boats ranging from 3 metres to 12 metres. They are one-piece made, which means that no parts are attached together to form the finalized fender, and have consistent wall thickness as well.

- Inflation pressure: 2.1lbs/0,15bar at 68° F/20° C
- Material : Plastisol PVC
- Production process : Single procedure Rotational moulding



SERIES R

Series R are heavy duty Buoys in which the rib-reinforced rock solid ropehold is made in such way, in order to provide extra strength and durability. A versatile buoy for the most adverse conditions. Marking gear for ocean, sea, river or lake, it is becoming widely popular among commercial fishermen for its durability but also among the recreational boats too.



SERIES H

Series H are heavy duty boat fenders in which the rib-reinforced rock solid rope-holds in the two sides of the fender are made in such way, in order to provide extra strength and durability for the fender.

A versatile fender for the most adverse conditions. Suitable for any use and any kind of boat from 10- 50ft, the Ocean fenders "fends" proudly.

INFLATABLE FENDERS/BOUYS

CODE	TYPE	SERIES	COLOUR	MATERIAL
071984 - 072453	SERIES H	H2 TO H7	DUAL TONE, SOLID	PLASTISOL PVC
072261 - 072266	SERIES L	L1 TO L6	SOLID WHITE	PLASTISOL PVC
071994 - 072000	SERIES R	R2 TO R7	DUAL TONE	PLASTISOL PVC

The "Magnus" inflatable fenders for mega yachts are made of reinforced PVC material to ensure the safety of your precious property. Those heavy duty yacht fenders are welded together, and not glued, in order to offer you the most secure, safe, and convenient mooring a fender can offer. There are options with 1 or 3 D-rings attached on each side of the bumper, as well as wrap around straps for better durability and strength. They are light in regard to their size, simple to use and when deflated can be stowed in small lockers to save you much needed space on board. They can be quickly inflated by using any standard or electric pump and easily mounted. The "Magnus" inflatable fenders are available in various sizes for yachts up to 80 meters, and in black colour.

- Thickness: 1.2mm
- Material: PVC Body
- D-ring
- Wrap around tape
- Recommended inflation pressure: 2,4psi



MAGNUS

The "Easystore Plus" Inflatable fenders for large yachts are made of reinforced, abrasion resistant PVC material. They are light, simple to use and when deflated can be stowed in small lockers to save you much needed space. They can be quickly inflated-deflated by using any standard or electric pump and easily mounted using the rope supplied.

The "Easystore Plus" Inflatable yacht fenders are available in various sizes and in light grey colour.

- Thickness: 0,9mm
- Material: PVC Body
- D-ring
- Rope: Ø 7mm
- Recommended inflation pressure: 2,4psi



EASYSTORE PLUS

MEGA YACHT FENDERS

CODE	TYPE	LENGTH	DIAMETER	BOAT SIZE (ft)	COLOUR
057316	INFLATABLE	850 MM	280 MM	40 M - 50 M	SOLID WHITE
057318	INFLATABLE	1320 MM	420 MM	70 M - 140 M	
072159	INFLATABLE	1320 MM	420MM	130 M -190 M	SOLID BLACK
072160	INFLATABLE	1600 MM	650 MM	140 M -210 M	

for more Products and Accessories visit us at www.gtmphuket.com



UTILITY SERIES

A Utility fender for every use and everyone! The new U series introduced by Ocean is the point when simplicity and elegance become one, with the high gloss finish giving you the ultimate touch of style. You can choose between white, royal blue or black colour and through a variety of six different sizes. In addition, the "U series" of fenders are made in one-piece, resulting in consistent wall thickness thought the fender. The simple valve of the fender offers convenient inflation and maximum protection at the same time. The new U series by Ocean fenders, manages to offer competitiveness without sacrificing our quality!



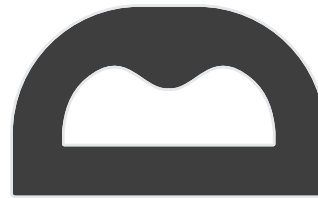
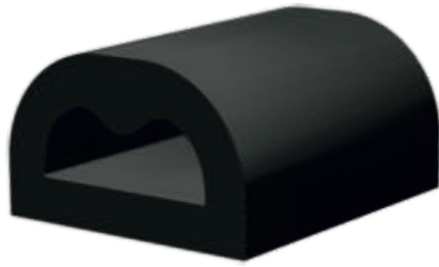
RT SERIES

The "RT Series" rope through fenders, distinct for their multiple use since they are designed for horizontal and vertical application for any yacht. The "RT Series" by Ocean is the point where performance and strength become one, with the reinforced vertical ribs giving you the extra protection you need. In addition, the "RT Series" of fenders are made in one-piece, resulting in consistent wall thickness thought the fender. As all of the Ocean fenders, it is made out of Plastisol PVC material, with rotation moulding procedure. The simple valve of the fender offers convenient inflation and maximum protection at the same time.

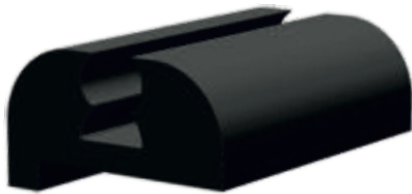


TYPE 'A' CLIP-ON

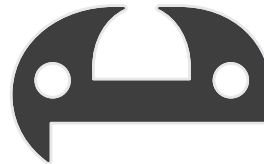
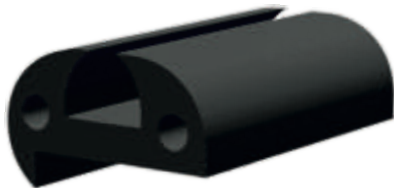
Type A clip-on boat fender is the first and unique solid fender, which clips on the guardrail, and is manufactured from Flexible Integral PU Skin Foam technology. It is a boat fender that cannot deflate. It offers the best shock absorption and lifetime performance among other boat fenders, providing exceptional protection. It has impressive durability, as this fender cannot deflate no matter the pressure. It is always in place and ready to use in seconds, and it remains steady even with strong wind. There is no need for fender baskets or other inconvenient stowage and they don't get in the way on the side decks. It can be used for the protection of the boat both horizontally and vertically. The Type A clip-on solid fender has one through hole with nylon fiber reinforced bushes for easy and safe installation.



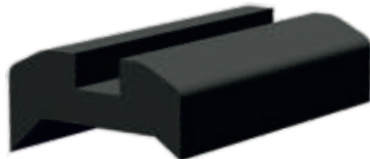
E



D



C



B



A

CODE	PROFILE	DIMENSIONS	COLOUR	MATERIAL
090005	A	50 MM X 27 MM	BLACK	High Density Rubber
090004	B	54 MM X 28 MM		
090003	C	63 MM X 28 MM		
090002	D	68 MM X 38 MM		
090001	E	76 MM X 46 MM		

GUNWALE FENDERS

INFLATABLE LIFE JACKET



SIGMA



YPSILON



EPSILON

CODE	TYPE	BOUYANCY	OPERATING HEAD	COLOUR	INFLATOR
071094	SIGMA 170N	170 N	AUTO/ MANUAL/ORAL	RED	COMPATIBLE WITH ALL MAJOR CYLINDER (CO ₂) SUPPLIERS
071725	YPSILON 165N	165 N	AUTO/ORAL	DUO	
071724	EPSILON 165N			RED/BLACK	

SOLAS LIFE JACKET



ADULT



ADULT



CHILD

CODE	TYPE	DIMENSIONS	COLOURS	LSA CODE
070179	ADULT FOLDABLE	350 MM X 620 MM X 130 MM	SAFETY ORANGE	2010
070178	ADULT	360 MM X 550 MM X 130 MM		
070177	KIDS	280 MM X 510 MM X 100 MM		



LALIZAS



QUICK RD



GIOVE

CODE	TYPE	Ø INT.	Ø EXT.	HEIGHT	WEIGHT	MATERIAL	LSA CODE
038158	GIOVE SOLAS	400 MM	600 MM	120 MM	2.5 KG	POLYETHYLENE	SAFETY ORANGE
070090	LALIZAS SOLAS	440 MM	730 MM	730 MM	2.5 KG , 4 KG		
070164	QUICK RD	300 MM	590 MM	100 MM	2.5 KG , 4 KG	POLYESTER & PVC	ORANGE/ YELLOW

LIFEBUOY RING/HORSESHOE



LALIZAS OCEANO



PACK



CANISTER

LALIZAS ISO-RAFT



VALISE

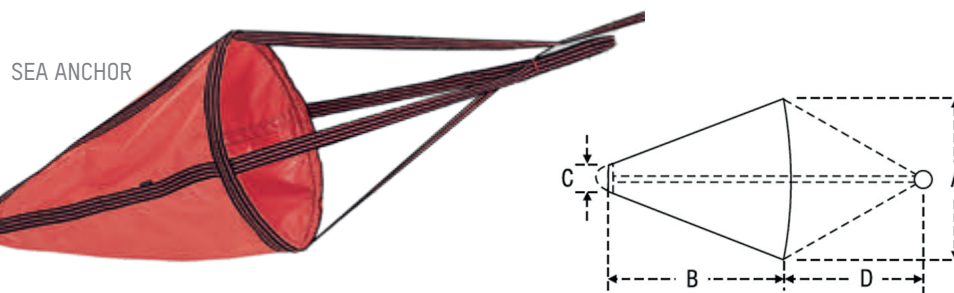
LIFERAFTS

CODE	TYPE	PERSON	HEIGHT	WIDTH	WEIGHT
072202	LALIZAS OCEANO SOLAS	6	1200 MM	2104 MM	2.5 KG
078840	LALIZAS ISO-RAFT	12	1350 MM	2667 MM	2.5 KG , 4 KG



M.O.B RESCUE SYSTEMS

CODE#	DETAILS	COLOUR	LENGTH
071682	Life Link mini, Man Overboard rescue system anti slip plastic sleeve	YELLOW	20 metres
020440	Life Link, ManOverboard Rescue system with buoyant PVC life-sling		50 metres
098991	Floating Rope Polyethylene, Orange (6 MM, 8 MM, 10 MM)	ORANGE	200 metres



SEA ANCHOR

CODE	TYPE	BOAT LENGTH	A	B	C	D
010071	SEA ANCHORS (DROGUE)	4.5 M	500 MM	550 MM	80 MM	640 MM
010073		7.5 M	1250 MM	1250 MM	170 MM	1250 MM
010075		12 M	1900 MM	1450 MM	200 MM	1300 MM

for more Products and Accessories visit us at www.gtmphuket.com

Weighing only 71 pounds the Walker Bay 8 is easy for one person to handle in and out of the water. Its light weight and innovative features like the Wheel in the Keel™ make it perfect for people who want a boat they can transport easily.

WALKER BAY 8

STANDARD FEATURES:

- One-piece DuraTech™ hull
- Seats with positive flotation
- Wheel in the Keel™
- Stainless steel bow eye
- One way drain plug



WALKER BAY



ROW. MOTOR. SAIL
Maximize your fun: add a Tuber or a Sail Kit

* OARS AND OARLOCK OPTIONAL

CODE	TYPE	LOA	BEAM	MAX HP	CAPACITY	WEIGHT
090001	WALKER BAY 8 WB 8S	2500 MM	1320 MM	2 HP	2 PERSONS	32 KG

Boasting all the same innovative features as the Walker Bay 8, the Walker Bay 10 is roomier and comes with a reinforced gunwale, integrated cup holders, a non-skid cockpit floor and is rated for a higher horsepower motor and person capacity.

WALKER BAY 10

STANDARD FEATURES:

- One-piece DuraTech™ hull
- Seats with positive flotation
- Wheel in the Keel™
- Reinforced Gunwale
- Stainless steel bow eye
- One way drain plug
- Integrated cup holders
- Integrated floor with non-skid pads



WALKER BAY

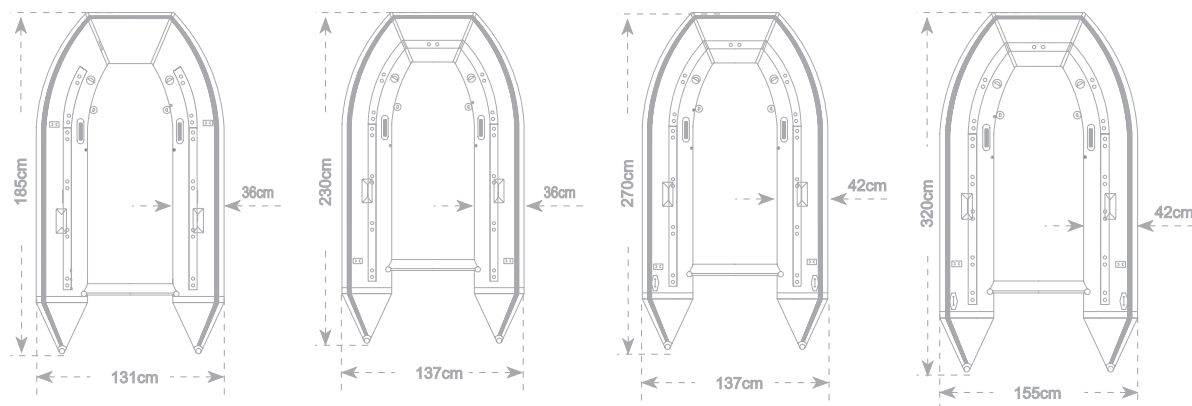


ROW. MOTOR. SAIL
Maximize your fun: add a Tuber or a Sail Kit

* OARS AND OARLOCK OPTIONAL

CODE	TYPE	LOA	BEAM	MAX HP	CAPACITY	WEIGHT
090002	WALKER BAY 10 WB 10F	2950 MM	1450 MM	3 HP	3 PERSONS	57 KG

HERCULES
PRO



Inflatable boat "HERCULES PRO"

The new Inflatable boat HERCULES PRO series guarantees construction of high quality and excellence in performance. They are available in 5 sizes: 185,230,270,310,320 and 3 floor types: Aluminum, Plywood and FRP(Fibre Reinforced Plastic).

HERCULES PRO boats ' standard equipment includes two-piece aluminum oars, marine grade plywood bench seat, foot pump, repairing kit, owner's manual and carrying bag.

HERCULES PRO are made of resisting and specially treated PVC that ensures the high quality of the boats. Lalizas offers a 3-year warranty for the hull seams and a 5-year warranty for the fabric hull.

The new HERCULES PRO series comes in light grey color.

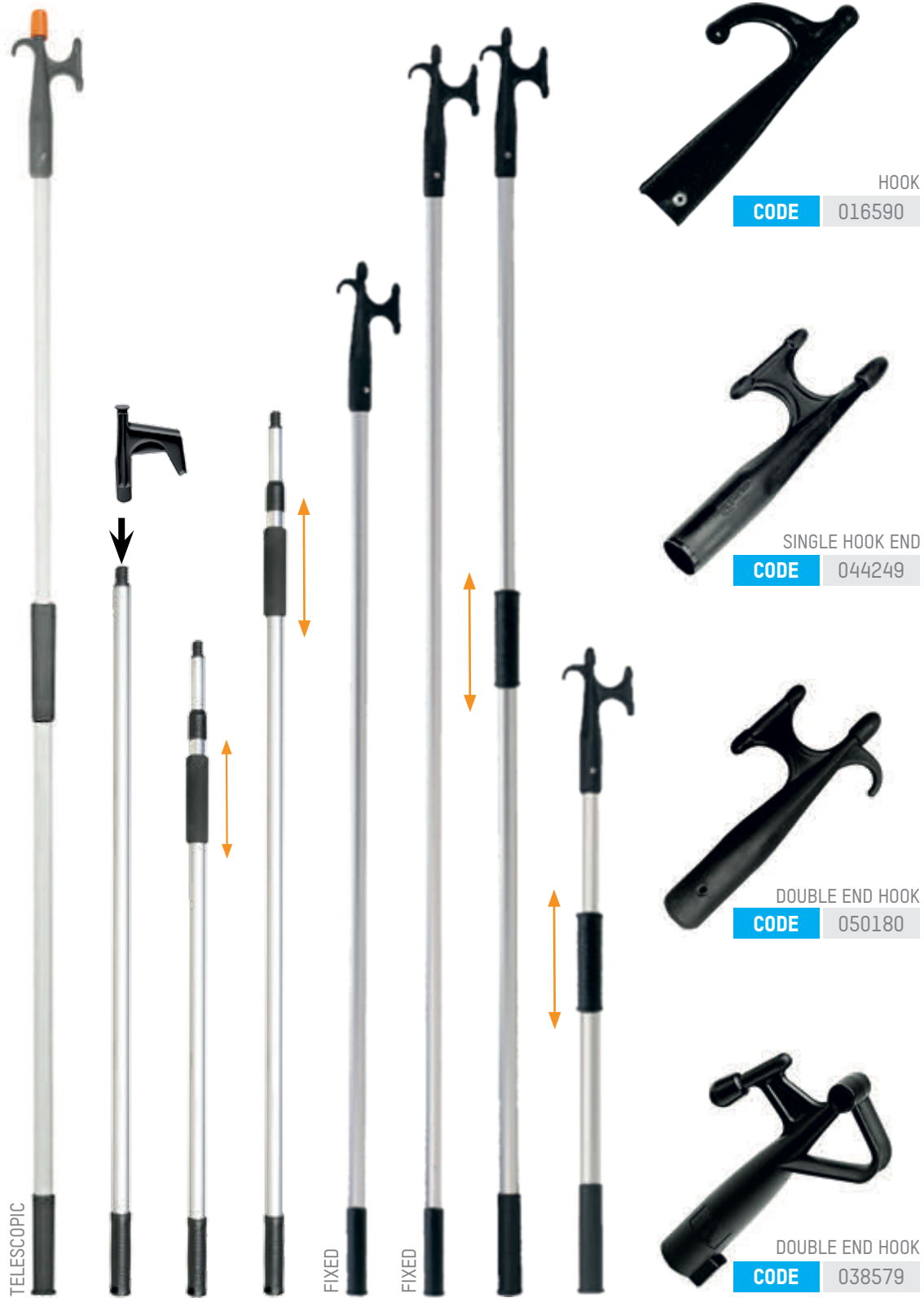
Standard equipment 1 Wooden Bench Seat, 2 Aluminum Oars, Foot Pump, Repair Kit, Storage Bag

CODE	TYPE	LOA	BEAM	MAX HP	CAPACITY	WEIGHT
071782	HERCULES PRO 185	1850 MM	1310 MM	2.5 HP	2 PERSONS	22 KG
071783	HERCULES PRO 230PL/D	2300 MM	1370 MM	2 HP	2 PERSONS	38 KG
071786	HERCULES PRO 270AL/D	2700MM	1370 MM	10 HP	3 PERSONS	48 KG
071788	HERCULES PRO 320AL/D	3200 MM	1550 MM	15 HP	4 PERSONS	55 KG

HERCULES PRO

for more Products and Accessories visit us at www.gtmphuket.com

BOAT HOOKS & HOOK ENDS



CODE	TYPE	LENGTH	SHAFT	MATERIAL
050050	TELESCOPIC BOAT HOOK	1180 MM to 1960 MM	Ø 30 MM	Anodised Aluminum, grey/black
050030	FIXED LENGTH BOAT HOOKS	1470 MM or 1750 MM	Ø 25 MM	Aluminum, BLACK



CODE	TYPE	LENGTH	SHAFT	MATERIAL
050240	PALM GRIP PADDLE	1050 or 1200	Ø 25 MM	Aluminum, black
050200	POWER PALM GRIP	1350 or 1550	Ø 35 MM	Aluminum, black
044348	TELESCOPIC PADDLE W/DOUBLEHOOK	1430 or 1950	Ø 30 MM	Aluminum, black

PADELS

for more Products and Accessories visit us at www.gtmphuket.com



ELECTRIC TUNNEL THRUSTERS

Max Power offers a complete range of 12/24v composite electric tunnel thrusters to suit motor yachts and deep footed sailing yachts from 17' to 85'.

Designed for performance and durability each model is easy to fit, highly cost effective, and integrates a variety of unique features.

MODEL	CT 100
BOAT LENGTH	32 FT - 50 FT
PROPELLERS	DUO
THRUST	96 KG / 212 LBS
POWER	7.1 KW / 9.5 HP
WEIGHT	24 KG
CODE	042534



IGNITION PROTECTED THRUSTERS

Max Power's new range of ignition protected tunnel thrusters allows the safe use of an electric tunnel thruster in petrol / gas engine vessels where there may be potentially flammable gases. IP thrusters can also be installed in habitually wet or damp areas such as sail lockers, or in the transom of deep "V" shaped motor yachts.

MODEL	CT 125-IP
BOAT LENGTH	35 FT - 58 FT
PROPELLERS	DUO
THRUST	115 KG / 254 LBS
POWER	8.58 KW / 11.5 HP
WEIGHT	27.2 KG
CODE	317616

BOW THRUSTERS

HYDRAULIC TUNNEL THRUSTERS

Max Power's range of hydraulic tunnel bow thrusters are ideal for commercial and heavy displacement / high windage vessels from 40 to 85 feet.

Designed for durability and performance, hydraulic tunnel thrusters are ideal when long runtimes are required.

MODEL	CT HYD 325
BOAT LENGTH	52 FT - 90 FT
PROPELLERS	DUO
THRUST	250 KG / 515 LBS
POWER	14 KW / 18.7 HP
WEIGHT	24 KG
CODE	317598

**STERN POD THRUSTERS**

The Max Power Stern Pod offers an innovative solution to the often difficult tasks of installing a thruster into the stern of modern yachts.

Stern pod units can be installed entirely from the outside of the transom, reducing the need for inside access.

MODEL	CT 100
BOAT LENGTH	32 FT - 51 FT
PROPELLERS	DUO
THRUST	96 KG / 210 LBS
POWER	7.1 KW / 9.5 HP
WEIGHT	41 KG
CODE	317630





ELECTRIC RETRACTABLE THRUSTERS (VERTICAL)

with the high performance characteristics of retractable units, the electric retractable thruster range is ideal for modern sailing yachts and super fast motor yachts. Retracting down to reach ideal immersion depth, all retractable bow thrusters offer exceptional power efficiency.

MODEL	VIP 250 ELECTRIC
BOAT LENGTH	50 FT - 80 FT
PROPELLERS	DUO
THRUST	145 KG / 319 LBS
POWER	9.5 KW / 12.74 HP
WEIGHT	54 KG
CODE	035043



HYDRAULIC RETRACTABLE THRUSTERS (VERTICAL)

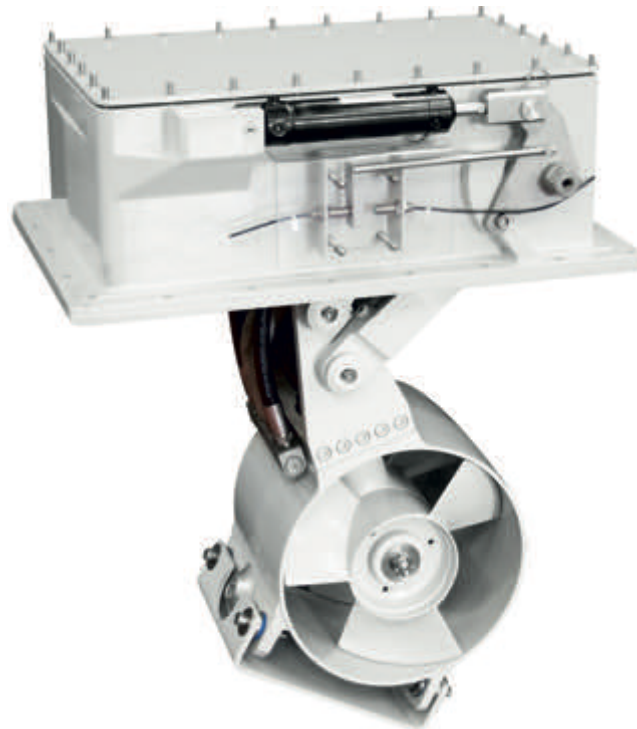
provide a perfect solution. Lightweight, powerful and allowing almost perfect weight distribution, designers and prestigious yards have consistently specified Max Power thrusters over the years. Max Power offers two product ranges in this family: the vertically retracting VIP HYD range and the top end Retract™ folding series

MODEL	VIP 150 HYD
BOAT LENGTH	55 FT - 75 FT
PROPELLERS	DUO
THRUST	120 KG / 264 LBS
HYD POWER	10 KW
WEIGHT	28 KG
CODE	317703

BOW THRUSTERS

HYDRAULIC RETRACTABLE THRUSTERS
 Retract™ thruster range offer exceptional durability & performance characteristics. Light, compact & built following exacting engineering standards these folding retractable units have been fitted to the worlds most prestigious super yachts for many years.

MODEL	R300
BOAT LENGTH	60 FT - 85 FT
PROPELLERS	DUO / TRIPLE
THRUST	11 KG PER KW
POWER MAX KW	14 KW
WEIGHT	73 KG
CODE	317807



BOW THRUSTERS



JOYSTICK
 Compatible with R Range Hydraulic Retractable thrusters R300 and R450
CODE 318226



JOYSTICK SIMPLE
 Compatible with all tunnel thrusters
CODE 318202



TOUCH PANEL
 Compatible with all tunnel thrusters
CODE 318200



CONTROL PANEL BOAT
 Compatible with R Range Hydraulic Retractable thrusters R300 and R450
CODE 318234



RADIO REMOTE CONTROL
 Max Power's radio remote control is designed to work with our entire range of tunnel and retractable thrusters. The remote control can also be used to operate additional onboard equipment such as windlasses, passarelles, cranes, etc.
CODE 312970

CONTROL PANELS AND REMOTE CONTROLS

PORTABLE HDPE TANK WITH FILTER



PORTABLE HDPE JERRYCANS



HULK HDPE TANK WITH FILTER



PORTABLE FUEL TANKS

CODE#	TYPE	CAPACITY	LENGTH	WIDTH	HEIGHT	GUAGE	MATERIAL
044803	HULK PORTABLE TANKS	12 LITRES	410 MM	260 MM	195 MM	-	HDPE (HIGH- DENSITY POLY- ETHYLENE)
044805	HULK PORTABLE TANKS	30 LITRES	510 MM	360 MM	270 MM	YES	
043598	"JERRYCANS" PORTABLE	10 LITRES	300 MM	240 MM	250 MM	-	
043600	"JERRYCANS" PORTABLE	15 LITRES	300 MM	245 MM	440 MM	-	
044789	PORTABLE WITH FILTER	25 LITRES	440 MM	295 MM	210 MM	YES	



ERCOLE

WATER

FUEL



SOGLIOLA

WATER

FUEL

CODE#	MODEL	TYPE	AVAILABLE CAPACITIES	MATERIAL
044789	ERCOLE	WATER - WHITE	45 Ltrs, 56 Ltrs, 70 Ltrs	HDPE (HIGH-DENSITY POLYETHYLENE)
044833	SOGLIOLA	FUEL - BLACK		

FIXED TANKS

for more Products and Accessories visit us at www.gtmphuket.com



ZEFIRO
VERTICAL MODEL
Optional sensor available



BLIZZARD
HORIZONTAL MODEL
Version 1-Holding base tank
Version 2-Holding base tank complete set (pump and sensor)



BORA
HORIZONTAL MODEL
Version 2-Holding base tank complete set (pump and sensor)



BORA
HORIZONTAL MODEL
Version 1-Holding base tank

WASTE WATER TANK

CODE#	MODEL	TYPE	AVAILABLE CAPACITIES	MATERIAL
196881	ZEFIRO	VERTICLE	40 Ltrs, 80 Ltrs	HDPE (HIGH-DENSITY POLYETHYLENE)
196871	BLIZZARD	HORIZONTAL	40 Ltrs, 60 Ltrs, 80 Ltrs, 100 Ltrs	
196895	BORA	HORIZONTAL	40 Ltrs, 60 Ltrs, 80 Ltrs, 100 Ltrs	



MP-01
UP TO 7 TANKS



MP-02
UP TO 2 TANKS

CODE#	MODEL
030014	MP-01
030007	MP-02

Resistance range
Ω 0-180 or Ω240-30
Power: 12V or 24V



MP-03
WATER LEVEL GAUGE

CODE 030008



MP-04
FUEL LEVEL GAUGE

CODE 030009



MP-05
HOLDING TANK GAUGE

CODE 030010



MP-09
AMPERE METER

CODE 030011



MP-10
HOUR METRE

CODE 030012



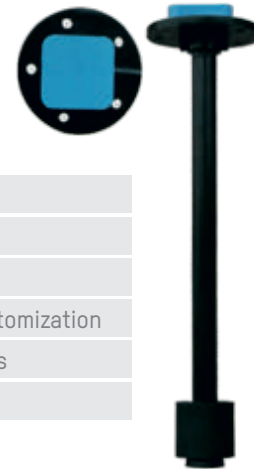
MP-13
VOLTMETER

CODE 030013

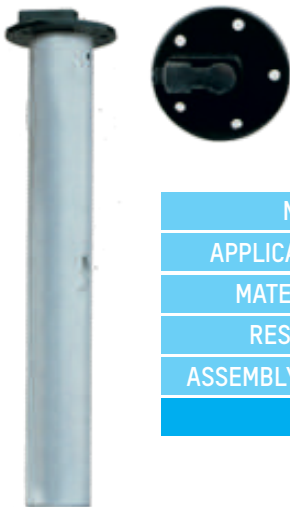
INDICATORS AND GUAGES



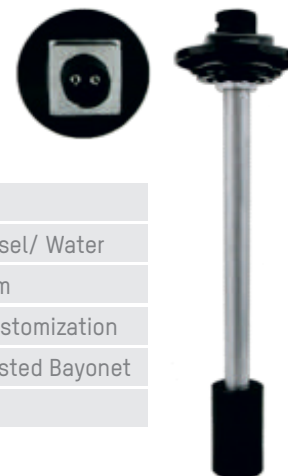
MODEL	SWF- 02
APPLICATIONS	Fuel/ Diesel/ Water
MATERIAL	S.S #316
RESISTANCE	Range Customization
ASSEMBLY WAY	1 - 1/4" BSP thread
CODE	030002



MODEL	SWF- 05
APPLICATIONS	Water
MATERIAL	ABS
RESISTANCE	Range Customization
ASSEMBLY WAY	SAE 5 Holes
CODE	030021



MODEL	SWF- 08
APPLICATIONS	Fuel/ Diesel/ Water
MATERIAL	Aluminium
RESISTANCE	Range Customization
ASSEMBLY WAY	SAE 5 Holes
CODE	030022



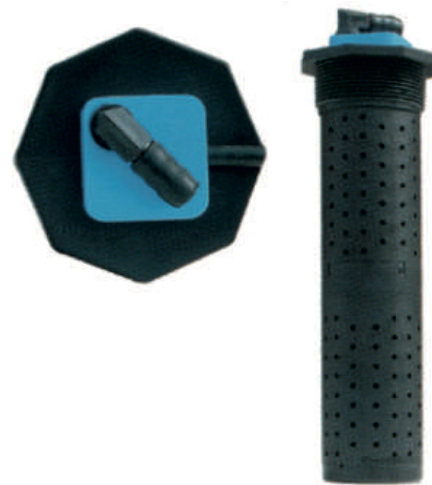
MODEL	SWF- 09
APPLICATIONS	Fuel/ Diesel/ Water
MATERIAL	Aluminium
RESISTANCE	Range Customization
ASSEMBLY WAY	Quick twisted Bayonet
CODE	030023

LIQUID LEVEL SENSORS



MODEL	S-Series
APPLICATIONS	Fuel/ Diesel/ Bio-Diesel
MATERIAL	Aluminium
RESISTANCE	Range Customization
ASSEMBLY WAY	Quick twisted Bayonet
CODE	030020

MODEL	SHF-01
APPLICATIONS	Sewage/ Waste water
MATERIAL	ABS
RESISTANCE	Customization
AVAILABLE SIZES	113/ 217/ 321/ 425
CODE	030015



MODEL	SHF-04
APPLICATIONS	Sewage/ Waste water/ Bio-Diesel
MATERIAL	Aluminium
RESISTANCE	Quick twisted Bayonet
ASSEMBLY WAY	1 - 1/4" BSP thread
CODE	030091

HW-01 optional gauge



CODE 030006

HW-01S optional gauge
*with switch (on/off)



CODE 030007

LIQUID LEVEL SENSORS



MODEL	750 GPH
VOLTAGE	12 V OR 24 V
APM	3 A, 2 A
HEIGHT	105 mm
WIDTH	75 mm
CODE	030670

MODEL	1100 GPH
VOLTAGE	12 V OR 24 V
APM	4 A, 2.5 A
HEIGHT	145 mm
WIDTH	120 mm
CODE	030671



MODEL	1500 GPH
VOLTAGE	12 V OR 24 V
APM	4.8 A, 2.3 A
HEIGHT	152 mm
WIDTH	108 mm
CODE	030672



MODEL	2000 GPH
VOLTAGE	12 V OR 24 V
APM	8.4 A, 4 A
HEIGHT	152 mm
WIDTH	108 mm
CODE	030673



BILGE PUMPS

Laguna bilge pumps are equipped with a built-in electric controlled snap switch making it fully automatic. No float switch needed and no power used until pump turns on when water level rises. These pumps are durable and easy to install, and they offer boaters a sleek new design that has been tested to be reliable, efficient, and automatic operative in harsh saltwater and freshwater uses. Equipped with stainless steel shaft 316, and high-impact durable plastic housing.

MODEL	750 GPH
VOLTAGE	12 V
APM	1.8 A
DIMENSIONS	151 MM x 78 MM x 95 MM
CODE	010027



MODEL	1100 GPH
VOLTAGE	12 V OR 24 v
APM	3 A / 2 A
DIMENSIONS	151 MM x 78 MM x 95 MM
CODE	010028



MODEL	1500 GPH
VOLTAGE	12 V OR 24 v
APM	4 A / 2.5 A
DIMENSIONS	151 MM x 78 MM x 95 MM
CODE	010029



NORMAL



INTEGRAL PROTECTION

CODE#	TYPE	MODEL	APM	HEIGHT
010031	OCEAN TECH AUTOMATIC SWITCHES	NORMAL	15	70 MM x 50 MM x 125 MM
010030	MERCURY FREE	INTEGRAL PROTECTION	15	150 MM x 90 MM x 90 MM

AUTOMATIC BILGE PUMPS

FLOAT SWITCHES



MODEL	FLANGE 3"	
VOLTAGE	12 V	24 V
APM	3.8 A	2 A
CAPACITY	280 MCH / 163 CFM	
DIMENSIONS	200 mm x 165 mm x 195 mm	
PORT CONNECTIONS	INTEL: 75 mm - OUTLET: 72 mm	
CODE	010004	010075

MODEL	FLANGE 4"	
VOLTAGE	12 V	24 V
APM	12 A	6 A
CAPACITY	500 MCH / 324 CFM	
DIMENSIONS	290 mm x 257 mm x 150 mm	
PORT CONNECTIONS	INTEL: 100 mm - OUTLET: 103 mm	
CODE	010005	010076



MODEL	FLANGE 6"	
VOLTAGE	12 V	24 V
APM	14 A	7 A
CAPACITY	750 MCH / 441 CFM	
DIMENSIONS	290 mm x 257 mm x 170 mm	
PORT CONNECTIONS	INTEL: 150 mm - OUTLET: 103 mm	
CODE	010006	010007

SPECIFICATIONS

- Extended Life Motor.
- Tough Reinforced Thermoset Plastic Housing
- Mounts To Any Flat Surface
- Slip-On Inlet Duct Connection
- Efficient High Volume Air Flow
- Low-Current Draw
- Corrosion-Resistant Materials
- Meets USCG Electrical Regulations
- ISO 8846,10133,9097
- CE Conforms with EN 55014 for Suppression of EM interference
- Meets USCG Electrical Regulations
- ISO 8846,10133,9097
- CE Conforms with EN 55014 for Suppression of EM interference

CENTRIFUGAL BLOWERS FLANGE TYPE

MODEL	FLEX 4"	
VOLTAGE	12 V	24 V
APM	12 A	6 A
CAPACITY	500 MCH / 324 CFM	
DIMENSIONS	290 mm x 257 mm x 150 mm	
PORT CONNECTIONS	INTEL: 100 mm - OUTLET: 103 mm	
CODE	010003	010077



CENTRIFUGAL BLOWERS FLEX TYPE



MODEL	FLEX 6"	
VOLTAGE	24 V	24 V
APM	7 A	14 A
CAPACITY MCH/CFM	750 / 441	1000 / 589
DIMENSIONS	290 mm x 257 mm x 180 mm	
PORT CONNECTIONS	INTEL: 100 mm - OUTLET: 103 mm	
CODE	010002	010078



MODEL	FLANGE	
VOLTAGE	12 V	24 V
APM	5 A	3 A
STATIC PRESSURE	30 mmWG	
FLOW	750 M ³ /H	
DIMENSIONS	220 mm x 160 mm	
HOSE	INTEL: 178 mm - OUTLET: 178 mm	
CODE	010010	010011



MODEL	NORMAL	
VOLTAGE	12 V	24 V
APM	5 A	3 A
STATIC PRESSURE	30 mmWG	
FLOW	750 M ³ /H	
DIMENSIONS	220 mm x 250 mm	
HOSE	INTEL: 178 mm - OUTLET: 178 mm	
CODE	010008	010009

INLINE BLOWERS

Marine pumps Ideal for deck washing, bilge pumping, refueling and pressurized systems.
 Self priming up to 3 meter vertical lift. *(cannot run dry)*
 All versions are available with super Nitrile impeller, upon request.



MODEL	ECO DECK PUMP	
VOLTAGE	12 V	24 V
APM	8 A	4 A
FLOW RATE	43 LPM	
HOSE CONN.	19 mm	
BODY	THERMO POLYMER	
DIMENSION	160 mm x 120 mm x 90 mm	
CODE	010032	010079



MODEL	BRASS DECK PUMP	
VOLTAGE	12 V	24 V
APM	8 A	4 A
FLOW RATE	35 LPM	
HOSE CONN.	1/2" 19 mm	
BODY	BRASS	
DIMENSION	160 mm x 120 mm x 90 mm	
CODE	010033	010080



MODEL	MAXI DECK PUMP	
VOLTAGE	12 V	24 V
APM	12.5 A	6 A
FLOW RATE	45 LPM	
HOSE CONN.	1/2" 19 mm	
BODY	BRASS	
DIMENSION	180 mm x 120 mm x 90 mm	
CODE	010034	010081

DECK WASH PUMPS

MACERATOR PUMP

Macerator with stainless steel or brass internal pump body or brass and rubber impeller discharge pump

- self priming up to 3 mt. vertical lift.
- 43 LPM output at 4 mt. total head
- macerates and discharges water and waste mixtures

MODEL	MACERATOR PUMP 43 lpm	
VOLTAGE	12 V	24 V
APM	12 A	7 A
FLOW RATE	43 LPM	
HOSE CONN.	38 HOSE BARB1 1/2"/25 MM	
BODY	THERMO POLYMER	
DIMENSION	240 mm x 130 mm x 90 mm	
CODE	010035	010082



MODEL	MACERATOR PUMP 43 lpm	
VOLTAGE	12 V	24 V
APM	12 A	7 A
FLOW RATE	43 LPM	
HOSE CONN.	38 HOSE BARB1 1/2"/25 MM	
BODY	BRONZE	
DIMENSION	240 mm x 130 mm x 90 mm	
CODE	010036	010083



MAXI MACERATOR PUMP

Toilet waste macerator pump, 47 min. rated, can discharge tanks up to 2100 litres.

Bronze pump body self priming up to 5 mt. vertical lift

MODEL	MACERATOR PUMP 47 lpm	
VOLTAGE	12 V	24 V
APM	14 A	8 A
FLOW RATE	47LPM	
HOSE CONN.	38 HOSE BARB1 1/2"/25 MM	
BODY	BRONZE	
DIMENSION	270 mm x 130 mm x 90 mm	
CODE	010037	010084



MACERATOR PUMP

TRANSFER/BALLAST PUMPS



- Self-priming up to 3 m vertical lift
- Light duty, 50 minute rated Diesel fuel transfer pump
- Unaffected by extreme temperature.
- Suitable for use from -30°C to +40°C
- Output: - 33 litres/minute (7.7 gallons/minute) at 3m head.

MODEL	TRANSFER PUMP	
VOLTAGE	12 V	24 V
APM	11 A	6 A
FLOW RATE	43 LPM	
HOSE CONN.	1/2". 19 mm	
IMPERLLER	SPECIAL NITRILE	
DIMENSION	160 mm x 120 mm x 90 mm	
CODE	010038	010085

- Maximum recommended total head 5m
- Reversible to both fill and empty tanks
- Simple design means fewer wearing parts.
- ISO 8846 MARINE (Ignition protection).

GEAR AND OIL CHANGER



GEAR AND OIL CHANGER PUMP:

Self priming electric gear pump particularly suitable for transfer oil, diesel, antifreeze, water and viscous liquids. Available also in oil changer kit version equipped with 180 cm long wires with end clamp ,fuse, and 2 hoses 6 and 8 mm. Can run dry. Pump body in PTFE.

MODEL	GEAR PUMP	
VOLTAGE	12 V	24 V
APM	5 A	2.5 A
FLOW RATE	8 LPM	
HOSE CONN.	3/8" 13 IN/OUT	
CONTINUOUS DUTY	NO	
DIMENSION	140 mm x 80 mm	
CODE	010039	010086

CIRCULATION PUMP



CIRCULATION PUMP

A modern circulation pump with a motor designed for continuous operation. Suitable for fresh water and glycol circulation.

MODEL	GEAR PUMP	
VOLTAGE	12 V	24 V
APM	5 A	2.5 A
FLOW RATE	115 LPM	
PORT CONN.	38 mm Inlet, 32 mm. Outlet	
DIMENSION	160 mm x 130 mm x 80 mm	
CODE	010040	010087

MODEL	DIAPHRAGM PUMP	
VOLTAGE	12 V	24 V
APM	4.5 A	2.5 A
FLOW RATE	22 LPM	
HOSE CONN.	19-25 (GREY)	
OPERATION	CAN RUN DRY	
DIMENSION	190 mm x 245 mm x 125 mm	
CODE	010041	010088



SUPERCOMPACT diaphragm pump can be incorporated into a small boat bilge space. Available in version with double 19 mm port connection and 25 mm port connection. Equipped with straight port connections.

MODEL	DIAPHRAGM PUMP	
VOLTAGE	12 V	24 V
APM	4.5 A	2.5 A
FLOW RATE	22 LPM	
HOSE CONN.	19 mm -25 mm (GREY)	
OPERATION	CAN RUN DRY	
DIMENSION	305 mm x 195 mm x 125 mm	
CODE	010042	010089



- Compact and simple design
- Flexible installation
- No filter required
- Can run dry.
- Can pump air/water mixture

- Low power consumption
- Quiet operation
- Meets ISO 8846 EN55014 Standards
- 360° rotational pump body
- Double non-return valve.

MODEL	DIAPHRAGM PUMP	
VOLTAGE	12 V	24 V
APM	6 A	3 A
FLOW RATE	32 LPM	
HOSE CONN.	38 mm (GREY)	
OPERATION	CAN RUN DRY	
DIMENSION	355 mm x 195 mm x 125 mm	
CODE	010043	010090



DIAPHRAGM PUMP

for more Products and Accessories visit us at www.gtmphuket.com

Supplied with a one push button flushing for easiness of operation



MODEL	STANDARD COMFORT	
VOLTAGE	12 V	24 V
APM	13 A	8 A
WEIGHT	12 KG	
HEIGHT	385 mm	
WIDTH	365 mm	
DEPTH	460 mm	
CODE	010018	010069

MODEL	STANDARD COMPACT	
VOLTAGE	12 V	24 V
APM	13 A	8 A
WEIGHT	11 KG	
HEIGHT	390 mm	
WIDTH	335 mm	
DEPTH	420 mm	
CODE	010019	010070

Supplied with Intelligent control system panel with 3 function control.



MODEL	SILENT COMFORT	
VOLTAGE	12 V	24 V
APM	11 A	6 A
WEIGHT	11 KG	
HEIGHT	385 mm	
WIDTH	365 mm	
DEPTH	460 mm	
CODE	010020	010071

MODEL	SILENT COMPACT	
VOLTAGE	12 V	24 V
APM	11 A	6 A
WEIGHT	10 KG	
HEIGHT	390 mm	
WIDTH	335 mm	
DEPTH	420 mm	
CODE	010021	010072

ELECTRICAL TOILETS



MODEL	MANUAL COMFORT
WEIGHT	10 KG
HEIGHT	335 mm
WIDTH	470 mm
DEPTH	460 mm
CODE	010022



MODEL	MANUAL COMPACT
WEIGHT	9 KG
HEIGHT	340 mm
WIDTH	450 mm
DEPTH	400 mm
CODE	010023

MANUAL TOILETS

Included kit contains all necessary parts, such as stainless steel bolts and washers, hose and gaskets and control panel in the electric standard and silent models.

SILENT ELECTRIC KIT

CODE 010025



MANUAL KIT

CODE 010024



STANDARD ELECTRIC

CODE 010026



CONVERSION KITS

Converts compact and comfort bowl of most toilets with 4 bolt fixing bowls and bolt centres on a 95 mm (3 3/4") diameter circle such as Matromarine, Jabsco, TMC, Raritan, RM69, Johnson Pump, Thetford, Lalizas

for more Products and Accessories visit us at www.gtmphuket.com



TYPE	VENT. SHAFT GRILLES COVER		
MATERIAL	POLYPROPYLENE (PP)		
DIMENSIONS	85MM, DIA 60MM OPENING		
COLOUR	WHITE	GREY	BLACK
CODE	012409	016307	016308



TYPE	SQUARE GRILLES COVER	
MATERIAL	POLYPROPYLENE (PP)	
DIMENSIONS	92 MM	188 MM
COLOUR	WHITE	
CODE	047063	050152



TYPE	RECTANGLE GRILLES COVER	
MATERIAL	POLYPROPYLENE (PP)	
DIMENSIONS	200 MM x 100 mm	
COLOUR	WHITE	BLACK
CODE	016311	017657



TYPE	VENT RECT DIVIDABLE	
MATERIAL	POLYPROPYLENE (PP) PLATED	
DIMENSIONS	255 MM x 155 mm	
COLOUR	CHROME PLATED	
CODE	060038	



TYPE	VENT WITH WATER OUTLET	
MATERIAL	POLYPROPYLENE (PP)	
DIMENSIONS	420 MM x 120 mm white	
COLOUR	WHITE	
CODE	044547	

PP VENT GRILLES COVERS

TYPE	LOUVERED VENT
MATERIAL	STAINLESS STEEL
DIMENSIONS	228 MM x 127 MM
CODE	060037



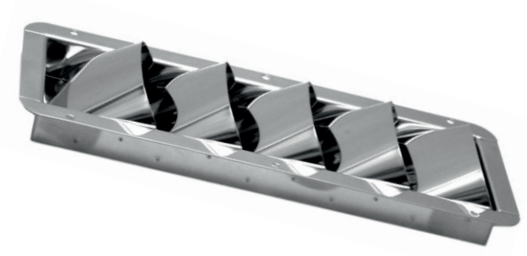
TYPE	ROUND VENT	
MATERIAL	STAINLESS STEEL	
DIMENSIONS	DIA 4 inches	DIA 5 inches
CODE	099809	099810



TYPE	BUTTERFLY VENT	
MATERIAL	STAINLESS STEEL	
DIMENSIONS	DIA 3.5 inches	DIA 6 inches
CODE	099808	099807



TYPE	BILGE VENT
MATERIAL	STAINLESS STEEL
DIMENSIONS	5 PARTS, 285 MM x 110 MM
CODE	060040



S.S VENT GRILLES COVERS

NYLON (PA) THRU-HULL



CODE#	TYPE	MODEL	FLUSH FLANGE	OVERALL LENGTH
196997	THRU HULL	Threaded with Hose Barb	40 mm to 72 mm	87 up to 167
044737		Threaded Flush Flange	42.8 mm to 76 mm	87 up to 167
023671		Easy Mount Threaded with Hose Barb	61 mm	125mm

PLASTIC (PP) THRU-HULL



CODE#	TYPE	MODEL	FLUSH FLANGE	OVERALL LENGTH
010256	THRU HULL	Flush Flange and Hose Barb	45 mm to 73 mm	83 mm up to 93 mm
070598		Flush Flange and Hose Barb, Chromed	45 mm to 74 mm	82 mm to 94 mm
010259		Telescopic	57 mm up to 54	28-44mm to 48-75mm

COPPER THRU HULL



CODE#	TYPE	DETAILS	MODELS (PIPE SIZE)	
060058	THRU HULL	Hull outlets	1 inch	1/2 inch
060060		Intake Stainer	1 inch	1/2 inch
060062		Hull outlets with hose connection	1 inch	1/2 inch

TYPE	NYLON (PA) WATER FILLER	
INDICATOR	BLUE	
EXTERNAL Ø	50 mm	
COLLAR Ø	85 mm	
COLOUR	WHITE	BLACK
CODE	045298	047618

Keyless cap.
Stainless steel retaining chain to prevent losing or misplacing cap



DECK FILLERS NYLON (PA)

TYPE	NYLON (PA) FUEL FILLER	
INDICATOR	RED	
EXTERNAL Ø	50 mm	
COLLAR Ø	85 mm	
COLOUR	WHITE	BLACK
CODE	050311	035011

Keyless cap.
Stainless steel retaining chain to prevent losing or misplacing cap



TYPE	DIESEL
EXTERNAL Ø	38 mm
COLLAR Ø	75 mm
CODE	060064



TYPE	GAS
EXTERNAL Ø	38 mm
COLLAR Ø	75 mm
CODE	060065



TYPE	WATER
EXTERNAL Ø	38 mm
COLLAR Ø	75 mm
CODE	060066

DECK FILLERS (S.S)



HIKER XT KNIFE
 Weight 149g
 Ideal for Travel
 Handle material Nylon
 Blade edge type Straight
 Blade material Stainless steel
 Sheath material Nylon
 Knife length (closed) 11cm

CODE 040004



Evolution Grip S18
 Weight 95g
 Ideal for everyday use
 Handle material Plastic
 Blade edge type Straight
 Blade material Stainless steel
 Knife length (closed) 85 cm

CODE 040005



Classic SD Multipurpose limited edition
 Weight 17 g
 Ideal for everyday use
 Handle material Plastic
 Blade edge type Straight
 Blade material Stainless Steel
 Sheath material Leather
 Blade material Stainless steel
 Knife length (closed) 58 cm

CODE 040002

ORIGINAL SWISS ARMY KNIVES

MADE IN SWITZERLAND

CLASSIC KNIFE

Weight 22 g
Ideal for travel
Handle material Nylon
Blade edge type Straight
Blade Material Stainless Steel
Knife length (closed) 58 cm

CODE 040007



SWISS CHAMP KNIFE

Weight 185 g
Ideal for Travel
Handle material Nylon
Blade edge type Straight
Blade Material Stainless Steel
Knife length (closed) 91 cm

CODE 040009

MADE IN SWITZERLAND

ORIGINAL SWISS ARMY KNIVES

Portable Isothermal Cooler "SeaCool"

The Portable Isothermal Cooler "SeaCool" is suitable for all of your picnic requirements. Elegantly shaped with a practical interior design, it can be ideally used in the boat, for camping, picnic and all outdoor usage. Made of solid polyurethane foam, it features high performance insulation, in order to maintain the temperature of the contents.

For even better cooling performance it is suggested to use additional ice cubes. The Portable Isothermal Cooler "SeaCool" is available in different sizes. They are equipped with large handle(s) for easy carriage and they have volume of 13lt, 48lt and 80lt.



CAPACITY	13 liters
LENGTH	380 mm
WIDTH	220 mm
HEIGHT	375 mm
CODE	031377



CAPACITY	48 liters
LENGTH	630 mm
WIDTH	300 mm
HEIGHT	370 mm
CODE	031378



CAPACITY	80 liters
LENGTH	820 mm
WIDTH	415 mm
HEIGHT	400 mm
CODE	070989

COOLER BOXES

PROFESSIONAL BOSUN'S CHAIR

Designed to the highest standards for professional riggers.
 Reinforced Nylon with PVC backing and PP webbing
 Supreme comfort for extended working time aloft
 Comfortable wrap around back
 Adjustable strap between the legs for extra safety
 Stows in its own bag which becomes a tool pouch when in use
 Attached side tool case
 Pocket for optional wooden seat
 Retro reflective tapes for better visibility

CODE 010210



SAFETY BOSUN'S CHAIR

This bosun's chair is made of reinforced Nylon 210D with PVC backing, 0,35mm thick. It comes complete with safety straps for added security, fitted side pockets for tools and a padded wooden seat. Lalizas offers you a bosun's chair to allow you to work comfortably, safely and in balance.

CODE 010080



LALIZAS 2 FINGER CUT AMARA

The brand new Amara Leather Lalizas gloves are suitable for every water or land activity. They come in two models, in 2 or 5 Finger Cut, and are made of amara leather, neoprene and a special extra durable fabric. The special Velcro above the wrist ensures ultimate fit.



ITEM 2 FINGER CUT AMARA
CODE 071695



ITEM 2 FINGER CUT AMARA
CODE 071690

BOSUN'S CHAIR

GLOVES

ALL AROUND



TYPE	WHITE
CODE	072164



TYPE	TRI
CODE	072167

CLASSIC LED 12 All-Round Lights 12/24V

All round lights are screw mounted on the mast as high as possible and are connected to the central or auxiliary circuit.

- For vessels up to 12m
- Visible distance: 2nm
- 12/24V DC & 2W
- White LED light or tri-color
- Deck mounted
- Waterproof, non corrosion, non magnetic

CLASSIC LED 20 Navigation Lights

Designed and type-approved for vessels under 20m. Made of a special compound of ABS and polycarbonate with shatterproof acrylic lens, non-magnetic stainless steel electrical contacts and a nitrile water resistant seal to provide reliable long life.

- For vessels up to 12m
- Visible distance: 2nm
- 12/24V DC & 2W
- White LED light or tri-color
- Deck mounted
- Waterproof, non corrosion, non magnetic

TYPE	STERN
CODE	030503

TYPE	BI COLOUR
CODE	030505

TYPE	MAST
CODE	030504



TYPE	PORT
CODE	030502



TYPE	STARBOARD
CODE	030510

NAVIGATION LIGHTS

CLASSIC 12 Combination Lights

The Tri-colour version features all around white port and starboard, while the four colour version features all around white, stern and a bi-colour. Both sets are made of UV stabilized ABS plastic, with shatter-proof acrylic lens, non magnetic stainless steel electrical contacts and a Nitrile water resistant seal to provide reliable long life. Both combinations are available in black and white and can be easily installed on any boat.

CLASSIC 12
All-Round & Port &
Starboard Light with
black housing

CODE 030429



CLASSIC 12
All-Round & Port &
Starboard Light
with white housing

CODE 030449



CLASSIC 12
All-Round & Stern
& Bi-colour Light
with black housing

CODE 030439



CLASSIC 12
All-Round & Stern
& Bi-colour Light
with white housing

CODE 030459



COMBINATION LIGHTS

POLE LIGHTS

This range of pole lights includes telescopic, folding, plug in and fixed, thus meeting all requirements. This type of pole lights may be used on sailing boats less than 20m (tri colour) or on powerboats less than 12m (white), instead of small all round lights.



TYPE STERN TELESCOPIC
CODE 030143



TYPE STERN FOLDABLE
CODE 030283



TYPE TRI COLOUR PLUG-IN
CODE 030234

POLE LIGHTS



- SEA NAV SAF 7×50**
- Magnification: 7
 - Objective Lens Diameter: 50
 - Angle of Vision: 6.2o
 - Exit Pupil: 7,1mm
 - Eye Relief: 10mm
 - Focus: Auto-focus
 - Prism Type: Porro K9
 - Field of View: 133@1000m
 - Lens Coating: Fully coated
 - Housing: Rubber
 - Weight: 750gr
 - Dimensions: 6,5x19x20cm

CODE 031317



- SEA NAV WECR 7×50**
- Magnification: 7
 - Objective Lens Diameter: 50
 - Magnification: 7
 - Objective Lens Diameter: 50
 - Angle of Vision: 7,5o
 - Exit Pupil: 6,8mm
 - Eye Relief: 23mm
 - Focus: Individual Eye Focus (Diopter Control)
 - Waterproof: Yes - Fogproof: Yes
 - Floating: Yes - Prism Type: Porro BAK-4
 - Field of View: 132@1000m
 - Rangefinder Reticule: Yes
 - Lens Coating: Multi coated
 - Housing: Rubber
 - Compass: Yes
 - Weight: 890gr
 - Dimensions: 20x8x15cm

CODE 031367



- KONUS SPY-6 NIGHT VISION MONOCULAR**
- 200-250M Night vision.
 - Lightweight, Compact
 - 5 X Optical Zoon + Digital Zoom
 - PC & Video Connectivity
 - Video & Image capability
 - TRIPOD & Scope attachment

CODE 072149

BINOCULARS AND MONOCULAR



VOYAGER BRACKET MOUNT
 Boat Style/Size- Power/SAIL
 Dial Size/Design 3" (7.6cm)/Flat-Card or CombiDial
 Night Lighting 12V Green
 Compensators Built-in
 Warranty 5-Year
 Approx. Shipping Wt. 1lb. 8oz. (680g)

CODE 071156



VOYAGER BRACKET MOUNT
 Boat Style/Size Power/Up to 24 Feet (7.32m)
 Dial Size/Design 2 3/4" (6.99cm)/Direct Read
 Night Lighting 12V Green
 Compensators Built-in
 Warranty 5-Year
 Approx. Shipping Wt. 1 lb. (454g)

CODE 031260

Compasses Explorer B-51
 Ritchie accuracy and mounting versatility are the perfect combination with Explorer Bracket Mount Compasses.

Specifications:
 Boat Style/Size Power/Up to 24 Feet (7.32m)
 Dial Size/Design 2 3/4" (6.99cm)/Direct Read
 Night Lighting 12V Green

Compensators Built-in
 Warranty 5-Year
 Approx. Shipping Wt. 1 lb. (454g)



Other models



Explorer B-51

CODE 031250



Signal horn set - 380ml

Signal Horn 380ml Acoustic range approximately 1500 m.

1. Install horn by screwing it on the pressurised container
2. To operate press down the horn
3. Signal horn must always be used in upright position
4. Do not store the pressurised container in direct sunlight. Do not expose to temperatures exceeding 40o C. Do not pierce or burn, even after use.

CODE 010033



ITEM	Electric air horn, MARCO	
VOLT	12 V	24 V
AMP	20 A	10 A
DECIBLE	123 DB	
FREQUENCY	315 Hz	
LENGTH	460 mm	
DIAMETER	200 mm	
CODE	071734	071735

MARINE HORNS



Megaphone w/ Siren, 20W, 400m

Diameter: 200mm

Length: 350mm

Power: 20W

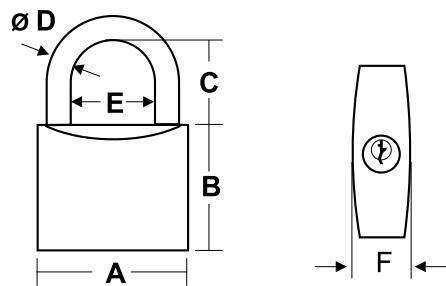
Sound Coverage: 400m approx.

Function: Talk/Siren (or Music)

Batteries: 6D

ABS Housing

CODE 090168



Marine Padlocks SeaLock

- Chrome plated brass body
- Stainless steel shackle & springs
- Automatic return of the key to extraction position
- Key withdrawal with open or closed shackle
- Available in blisters of 1, 3 and 5 padlocks
- In the set of 3 or 5 padlocks, All the padlocks unlock with the same key

ITEM	STANDARD SHACKLE	
A	30 mm	60 mm
B	27 mm	45 mm
C	17 mm	34 mm
D	5 mm	9 mm
E	15 mm	32 mm
F	13 mm	18 mm
CODE	011135	011138

ITEM	LONG SHACKLE	
A	30 mm	50 mm
B	27 mm	40 mm
C	24 mm	80 mm
D	5 mm	8 mm
E	15 mm	25 mm
F	13 mm	16.5 mm
CODE	011140	011142

MARINE LOCKS

The 'Store All' hook

can be used in almost all places on a boat. All you have to do is attach them on a flat surface and use them for lines, clothing, towels, etc.

ITEM	WHITE	GREY
LENGTH	25 mm	
HEIGHT	75 mm	
WIDTH	30 mm	
CODE	011140	011142



HOOKS

FLOATING KEYCHAINS



ITEM	KEY HOLDER "FENDER"	
TYPE	Cylindrical	Round
CODE	011864	011904



ITEM	KEY-RING BOUY-SHAPED	
TYPE	Buoyancy capability is 44gr	
CODE	044526	



ITEM	Isotherm Cover "Store All" for Drinks	
CODE	099828	



ITEM	Drink holder 'Store-All'	
CODE	099232	094161

UTILITY AND STORAGE



ITEM	Gps/cell phone case 'Store-All'	
CODE	094150	



ITEM	Galley case 'Store-All'	
CODE	094160	

Thermometer / Hydrometer / Clock,
SeaNav, wooden, with 2 pen holders

LENGTH	217 mm
HEIGHT	80 mm
WIDTH	28 mm
CODE	011888



Thermometer / Hydrometer / Clock,
SeaNav, wooden

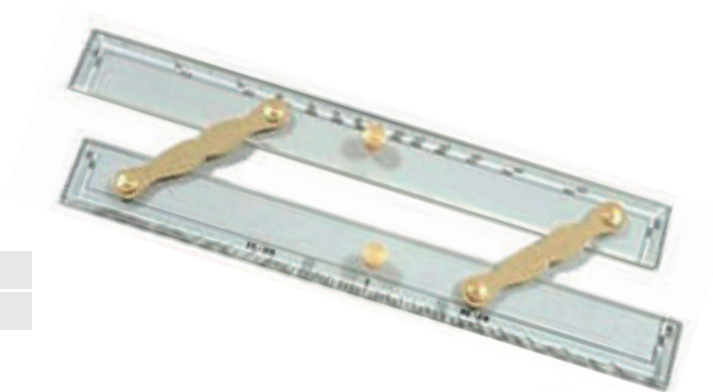
LENGTH	243 mm
HEIGHT	88 mm
WIDTH	22 mm
CODE	011892



Parallel Rulers

Parallel rulers are used to
measure course bearing

LENGTH	380 mm	300 mm
CODE	094008	094009



LENGTH	178 mm	203 mm
CODE	093968	093969



LENGTH	178 mm	203 mm
CODE	094003	094004

MARINE CLOCKS

PARALLEL RULERS

BRASS DIVIDERS



ITEM	BOW CHOCKS		
SIZE	150	200	250
CODE	060018	060019	060020



ITEM	U BOLTS		
SIZE	110	130	150
CODE	060001	060003	060004



ITEM	CROSS BOLLARD	
SIZE	150	205
CODE	060005	060006



ITEM	LIFT RING		
SIZE	40	64	76
CODE	060042	060043	060044



ITEM	CLEAT 150	CLEAT 250	CLEAT 380
CODE	060014	060015	060016



ITEM	FLUSH LIFT HANDLE
CODE	098719



ITEM	CLEAT 200
CODE	060017



ITEM	RING BOLT	
CODE	060071	060072

STAINLESS STEEL FITTINGS



TYPE	STAINLESS STEEL	
SIZE	38 X 38	50 X 50
CODE	070652	070654



TYPE	BARREL BOLT	
SIZE	90 X 39	108 X 39
CODE	070651	070653



TYPE	STAINLESS STEEL LONG	
SIZE	152 X 30	
CODE	060026	



TYPE	FUEL VENT 90°	
CODE	060029	



TYPE	STAINLESS STEEL HEAVY DUTY	
SIZE	75 X 38	
CODE	060028	



TYPE	FUEL VENT (SHIELD) 90°	
CODE	060032	



TYPE	STAINLESS STEEL HEAVY DUTY	
SIZE	100 X 100	
CODE	060025	



TYPE	SPRING HOOK M8	SPRING HOOK M6
CODE	060073	060074

STAINLESS STEEL FITTINGS



TYPE	BOW ROLLER TEFLON ROLLER
CODE	060008



TYPE	BOW ROLLER WITH PIN
CODE	060007



TYPE	RAIL END
CODE	060051



TYPE	RAIL END
CODE	060050

STAINLESS STEEL FITTINGS



TYPE	10 MM GALVANIZED CHAIN
CODE	095619



TYPE	8 MM GALVANIZED CHAIN
CODE	097710

TYPE	Anchor Delta stainless steel		
WEIGHT	6 KG	10 KG	20 KG
CODE	099425	099427	099429

TYPE	Folding Anchor, Inox 316		
WEIGHT	1.5 KG	2.5 KG	4 KG
CODE	092287	092288	092289

TYPE	Anchor hot dip galvanized, Danforth type		
WEIGHT	3 KG	8 KG	12 KG
CODE	092253	092255	092257

TYPE	Plough anchor, CQR type, Inox 316		
WEIGHT	9 KG	12 KG	15 KG
CODE	092273	092274	092275



ANCHORS



TYPE	LED dome surface mount
POWER	1.7 W
VOLTAGE	12 V
TEMPERATURE	4500 K
SIZE	Ø 137mm x 39 mm
CODE	099052



TYPE	LED flat surface mount
POWER	5 W
VOLTAGE	12 V
TEMPERATURE	2900 - 3200 K
SIZE	Ø 137mm x 12.6 mm
CODE	099053



TYPE	LED Tube interior
POWER	6 x 1.5 W
VOLTAGE	12 V
TEMPERATURE	2850-3200K
SIZE	Ø 386.3mm x 20.6mm
CODE	010063



TYPE	LED CABIN LIGHTS	
POWER	1.5 W	
VOLTAGE	12 V	24 V
TEMPERATURE	2900 - 3200 K	
SIZE	Ø 96mm x 26.50	
CODE	031371	031372



TYPE	LED Tube interior
POWER	6 x 1.5 W
VOLTAGE	12 V
TEMPERATURE	2850-3200K
SIZE	Ø 386.3mm x 20.6mm
CODE	010064

CABIN AND UTILITY LIGHTS

TYPE	H4 Halogen, 55 W	
CONTROL	Manual/ Remote*	
VOLTAGE	12 V, 5 A	24 V, 3 A
SIZE	220 mm x 160 mm x 220 mm	
CODE	010018	010067



TYPE	XEON, 55 W	
CONTROL	Remote	
VOLTAGE	12 V, 6 A	24 V, 3 A
SIZE	350 mm x 260 mm x 320 mm	
CODE	010014	010013



TYPE	H4 Halogen, 55 W x 2	
CONTROL	Manual/ Remote*	
VOLTAGE	12 V, 9 A	24 V, 6 A
SIZE	225 mm x 275 mm x 220 mm	
CODE	010017	010068



SEARCHLIGHTS

SWITCH PANELS

MARINE SUPERSTORE



TYPE	WATER RESISTANT
GANG	3 GANG
CODE	031384



TYPE	TOGGLE SWITCH
GANG	3 GANG
CODE	070578



TYPE	BILGE SWITCH
SPEC	WITH ALARM
CODE	031390



TYPE	WATER RESISTANT
GANG	4 GANG
CODE	031391



TYPE	WATER RESISTANT
GANG	4 GANG
CODE	031392



TYPE	WATER RESISTANT
GANG	6 GANG
CODE	031300



TYPE	WATER RESISTANT
GANG	6 GANG
CODE	031294



TYPE	WATER RESISTANT
GANG	6 GANG
CODE	031385



TYPE	TOGGLE SWITCH
GANG	6 GANG
CODE	031295

SWITCH PANELS



TYPE	BATTERY SELECTOR SWITCH
SPEC	4 POSITIONS
CODE	010016



TYPE	BATTERY SWITCH
SPEC	ON/ OFF
CODE	010017



TYPE	BATTERY BOX
EXTERNAL	470x225x255 mm
INTERNAL	385x175x225 mm
MATERIAL	Acid resistant polypropylene
CODE	017518



TYPE	BATTERY BOX
EXTERNAL	431x257x256 mm
INTERNAL	339x199x224 mm
MATERIAL	Acid resistant polypropylene
CODE	195539

BATTERY SWITCHES AND TOGGLE SWITCHES



TYPE	TOGGLE SWITCH
SPEC	WATER-PROOF
CODE	010044



TYPE	TOGGLE SWITCH
SPEC	ON / OFF / ON
CODE	010045



TYPE	TOGGLE SWITCH
SPEC	ON / OFF
CODE	010046



TYPE	TOGGLE SWITCH
SPEC	ON/ OFF
CODE	010047



TYPE	TOGGLE SWITCH
SPEC	HEAVY DUTY
CODE	010048



TYPE	TOGGLE SWITCH
SPEC	3 POSITION
CODE	010049



TYPE	AGC (3AG) FUSES
MATERIAL	Nickel-plated Brass
V. RATING	DC 32V, AC 125V/250V
A. RATING	0.5 A to 35 A range
CODE	010050



TYPE	FUSE HOLDER, WITH FUSE
SPEC	10A , 250 V
CODE	010051



TYPE	JMC FUSES
MATERIAL	Nickel-plated Brass
V. RATING	DC 32V, AC 125V/250V
A. RATING	1 A to 30 A range
CODE	010052



TYPE	AGC / JMC 4 FUSE BLOCKS
MATERIAL	ABS + Glass Fiber
V. RATING	DC 32V
A. RATING	60 AMPS MAX
CODE	010053



TYPE	MINI BLADE FUSES
MATERIAL	POLYAMIDE 66 / ZINC ALLOY
V. RATING	DC 32V, AC 125V/250V
A. RATING	2 A to 30 A range
CODE	010054



TYPE	AGC / JMC 6 FUSE BLOCKS
MATERIAL	ABS + Glass Fiber
V. RATING	DC 32V
A. RATING	50 AMPS MAX
CODE	010055



TYPE	STANDARD BLADE FUSES
MATERIAL	POLYAMIDE 66 / ZINC ALLOY
V. RATING	DC 32V, AC 125V/250V
A. RATING	1 A to 30 A range
CODE	010056



TYPE	AGC / JMC 6 FUSE BLOCKS
MATERIAL	ABS + Glass Fiber
V. RATING	DC 32V
A. RATING	80 AMPS MAX
CODE	010057

FUSE AND FUSE BLOCKS

DUAL BUS BARS

Base Material | Nylon, Glass Fiber reinforced
 Bus Material | Brass
 Max Operating Voltage | DC 32V
 Max Continuous Amp | 60A for each bus
 Screw Size | No. 8-32 x 1/4



ITEM	BF204-4P	BF204-6P	BF204-8P
DIMENSIONS	38 x 76 mm	38 x 114 mm	38 x 114 mm
CODE	010058	010064	010065

LARGE CURRENT BUS BAR

Base Material | PBT, Glass Fiber reinforced
 Bus Material | Copper, Brass-plated
 Max Operating Voltage | DC 48V
 Max Continuous Amp | 150A
 Screw Size | No. 8-32X1/4
 Terminal Stud Size | M6 x 25mm



ITEM	BF204-4P
DIMENSIONS	38 x 76 mm
CODE	010059

DUAL BUS BAR

Glass fiber reinforced Nylon base ensures great mechanical strength and durability
 Optional transparent insulating cover with recessed area for label stickers
 Tin-plated copper bus allowing current up to 150A
 Stainless steel studs and screws provide great anti-corrosion ability on board
 Insulated base ensures no leakage to metal hulls



ITEM	BF422-6P	BF422-12P
DIMENSIONS	2 x 6 x M4 (5/32")	2 x 12 x M4 (5/32")
CODE	010060	010066

TERMINAL STUDS

Base Material | Nylon, Glass Fiber reinforced
 Max Operating Voltage | DC 48V
 Max Amp per circuit | Determined by wires connected



ITEM	BF413-M6	BF413-M8
DIMENSIONS	2 x M6 (1/4")	2 x M8 (5/16")
CODE	010061	010062

TERMINALS AND BUS BAR



Premium Boat Wax

Premium Wax for full, all-over protection on gelcoat and painted surfaces

CODE 020003



All Over Boat Wash

Concentrated Boat Wash for all exterior surfaces (50:1)

CODE 020001



Boat Wash with Wax
100:1 Concentrate

Concentrated general purpose Boat Wash containing liquid waxing agent (100:1)

CODE 020005



Rib Tube Cleaner
50:1 Concentrate

Concentrated Cleaner for RIB Tubes and Fenders

CODE 020008



Super Stainless

Stainless steel cleaner and protector against the elements.

CODE 020009



Environmentally responsible & biodegradable Products

ISO 9001
QUALITY ASSURANCE

BOAT WASH AND BOAT CARE

**Gelcoat
Stain Remover**

Gel for removing ingrained dirt and staining on gelcoat and painted surfaces

CODE 020002



**Premium Boat
Polish with Wax**

Polish and wax to restore and protect dull faded gelcoat and painted surfaces

CODE 020004



**Interior Cleaner
& Deodouriser**
50:1 Concentrate

Concentrated Citrus Cleaner for all Interior use

CODE 020006



**Sail & Cover
Cleaner**
50:1 Concentrate

Concentrated Cleaner for Sails and Covers

CODE 020007



**GRUNT!
boat cleaner**

Liquid gel to help clean hard to shift nasty stains from fiberglass surfaces

CODE 020011



Environmentally responsible & biodegradable Products

**ISO
9001
QUALITY
ASSURANCE**

BOAT WASH AND BOAT CARE

